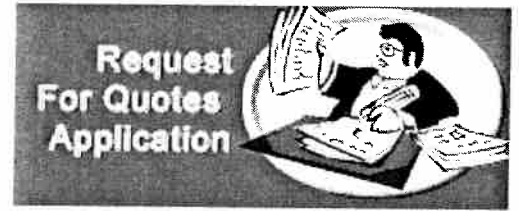




GUYSUCO
Purchasing Department



Logged on: Kwesi McIntosh

Purchasing Dept. | [Home](#)

RFQs
[View / Modify](#)

View an RFQ

Suppliers
[View / Modify](#)
[Add](#)

[Search Again](#)

[Print this page](#)

Commodities
[View](#)

Change Password
[Logoff](#)

REQUEST FOR QUOTATION				
RFQ No.:		5201002735/ FO		
Creation Date:		28-Jul-2010		
Closing Date:		16-Aug-2010		
KINDLY FORWARD QUOTATION. BIDS CLOSED AT 1:30PM ON THE DATE STATED.				
Line	Item No.	Description	Quantity	U/M
1		BEARING MILL TOP & BOTTOM. PLEASE SEE ATTACHED DRAWING ON WEBSITE.		1 SET

WebApp Vendors

[Add Vendors](#)

[Send RFQ](#)

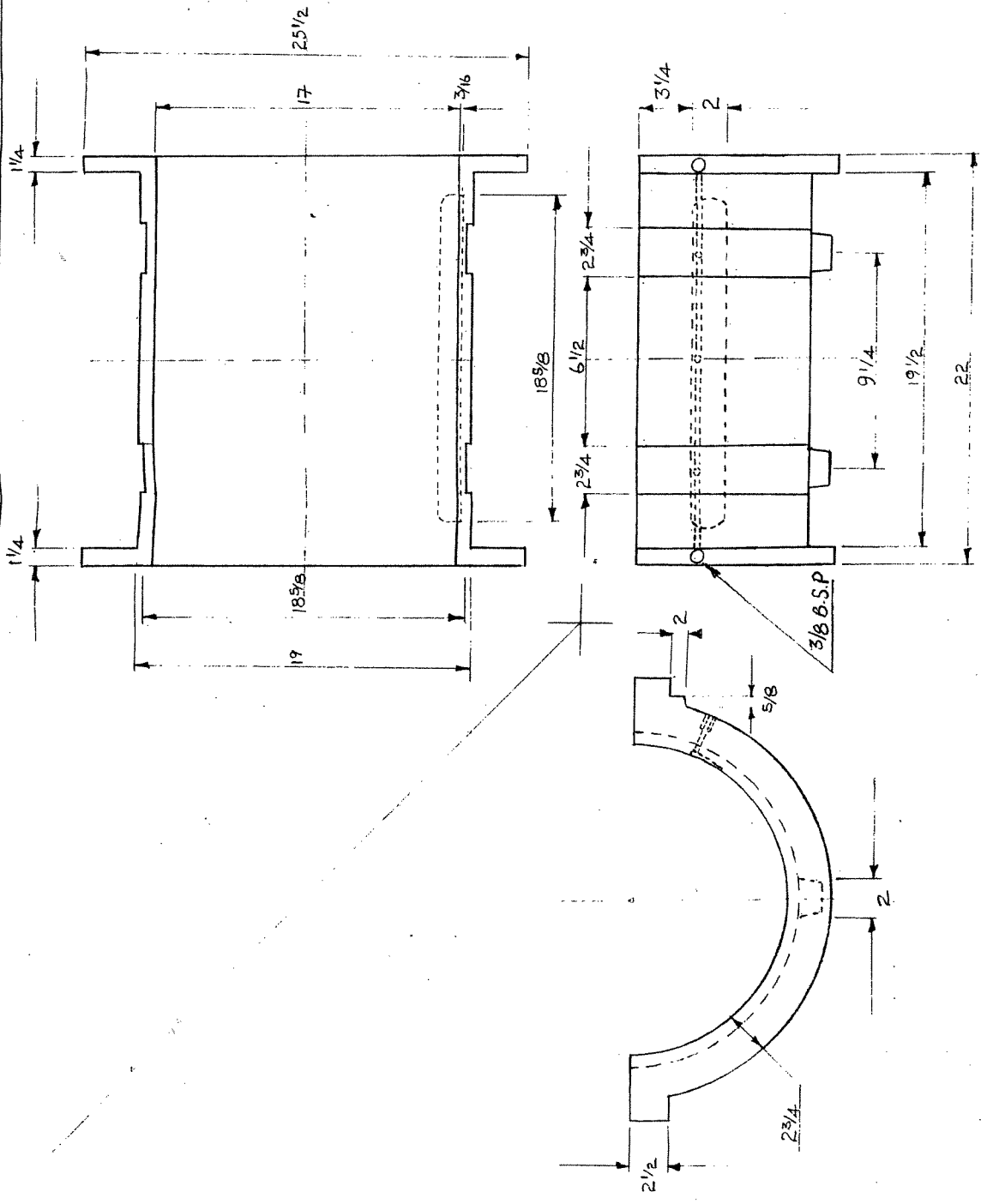
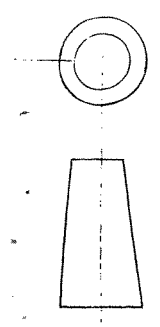
Powered by
ORACLE

[Go to top](#)

[Home](#) · [Helpdesk](#) · [Essential Information](#) · [The Learning Centre](#) · [Telephone Directory](#)

2005 Guyana Sugar Corporation, Inc.
Ogle Estate, East Coast Demerara
Tel: (592) 222-6030/41 Fax: (592) 222-6048
<http://intranet/>

10-01-2012



DRAWN BY : B.SOMWARU
DATE : 2006/08/02

TITLE : MILL TOP ROLLER BOTTOM HALF BEARING
MAT'L : BRONZE

CHECK BY :
ALL DIMENSION IN INCH

SCALE : NTS